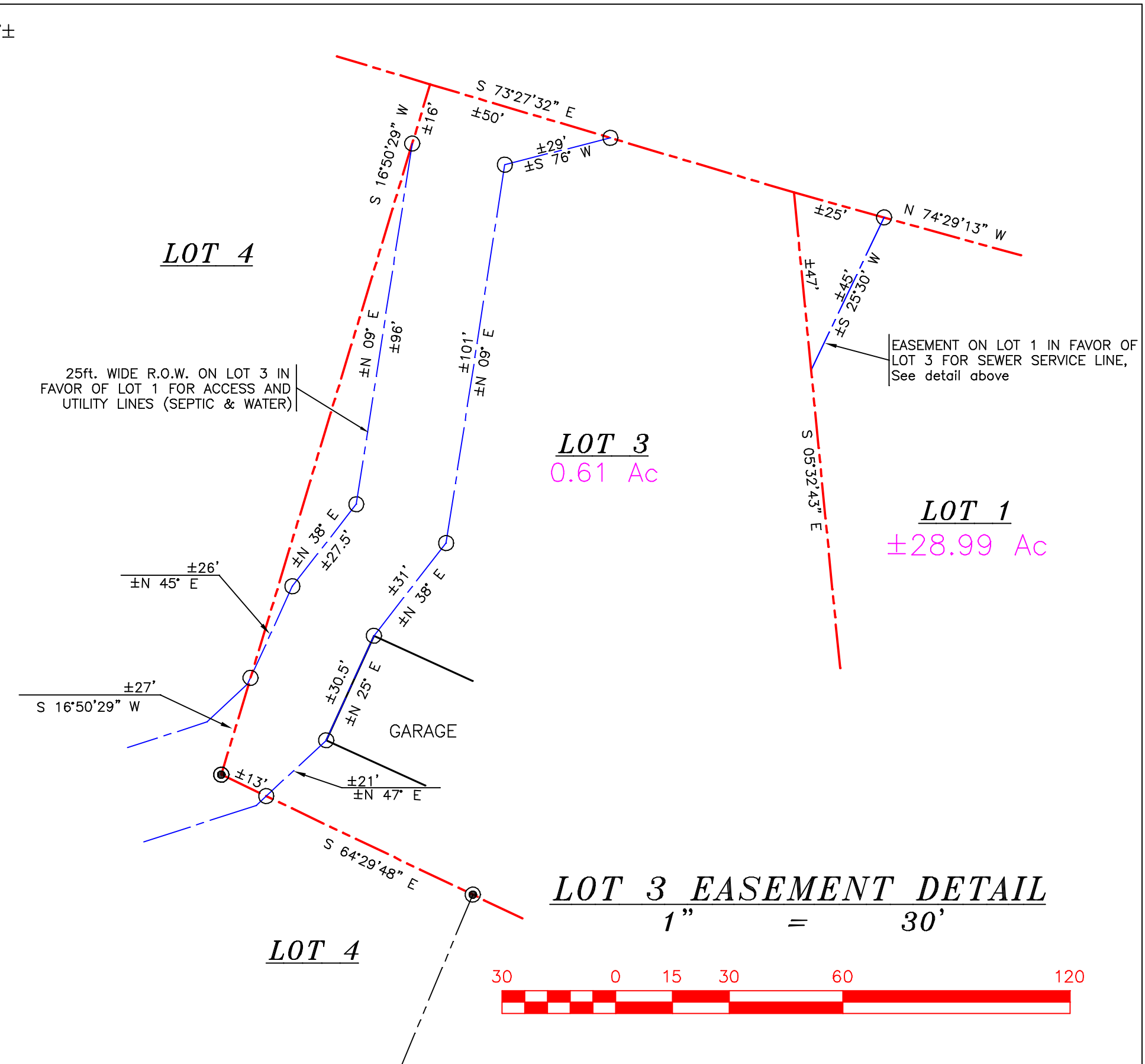


LOT 3 GENERAL DETAIL
1" = 30'



LOT 3 EASEMENT DETAIL
1" = 30'

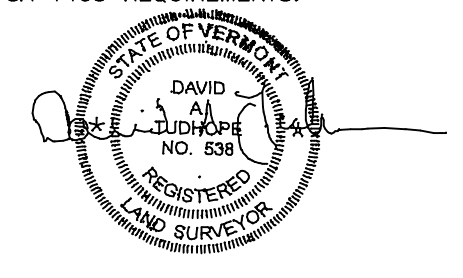


LEGEND

- CONC. MONUMENT FOUND OR SET
- IRON PIPE FOUND
- ⊙ REBAR TO BE SET (R.L.S.#538)
- ⊙ SEWER MANHOLE
- ⊙ WATER SERVICE CURB STOP
- ⊙ GAS VALVE
- ⊙ DRILLED WELL
- CALCULATED POINT
- UTILITY POLE
- — — — — PROPERTY LINE
- — — — — EASEMENT/RIGHT-OF-WAY
- — — — — AERIAL UTILITY LINES
- — — — — SEWER SERVICE LINE
- — — — — WATER SERVICE LINE
- — — — — MUNICIPAL SEWER MAIN
- — — — — MUNICIPAL WATER MAIN
- — — — — GAS LINE
- — — — — REC. PATH EASEMENT LIMIT
- ▨ AREA OF BOUNDARY ADJUSTMENT

TO THE BEST OF MY KNOWLEDGE AND BELIEF THIS PLAT IS BASED ON INFORMATION ABSTRACTED FROM THE LAND RECORDS IN THE TOWN OF ESSEX (DEEDS AND OTHER OFFICIAL RECORDS). ALSO ALL PHYSICAL EVIDENCE IN THE FIELD INCLUDING PAROLE EVIDENCE ACQUIRED FROM THE SURROUNDING LAND OWNERS. THE BEARINGS ARE MAGNETICALLY OBSERVED WITH A SUUNTO COMPASS. THE SURVEY WAS DONE WITH A CLOSED RANDOM TRAVERSE USING A TOPCON EDM ACQUIRING A 1:50,000 POSITIONAL TOLERANCE. THIS SURVEY CONFORMS TO 27 VSA 1403 REQUIREMENTS.

DAVID A. TUDHOPE
74 CAYUGA CT.
BURLINGTON VT. 05408
TELE: (802) 862-9360
dtudhope@aol.com
SITE TECH. B #230
REGISTERED LAND SURVEYOR # 538



16 MAY, 2022

**SIEGRIEST LOTS 1 & 3
BOUNDARY LINE ADJUSTMENT**

DETAIL SITE PLAN		
DRAWN	DATE	Prepared for:
D.P.C.	04/26/22	C.R. & A. Siegriest
APPROVED	DATE	232 River Rd.
D.A.T.	05/16/22	Essex, Vermont
SCALE	SHEET	PROJECT NO.
1" = 30'	2	2047-1